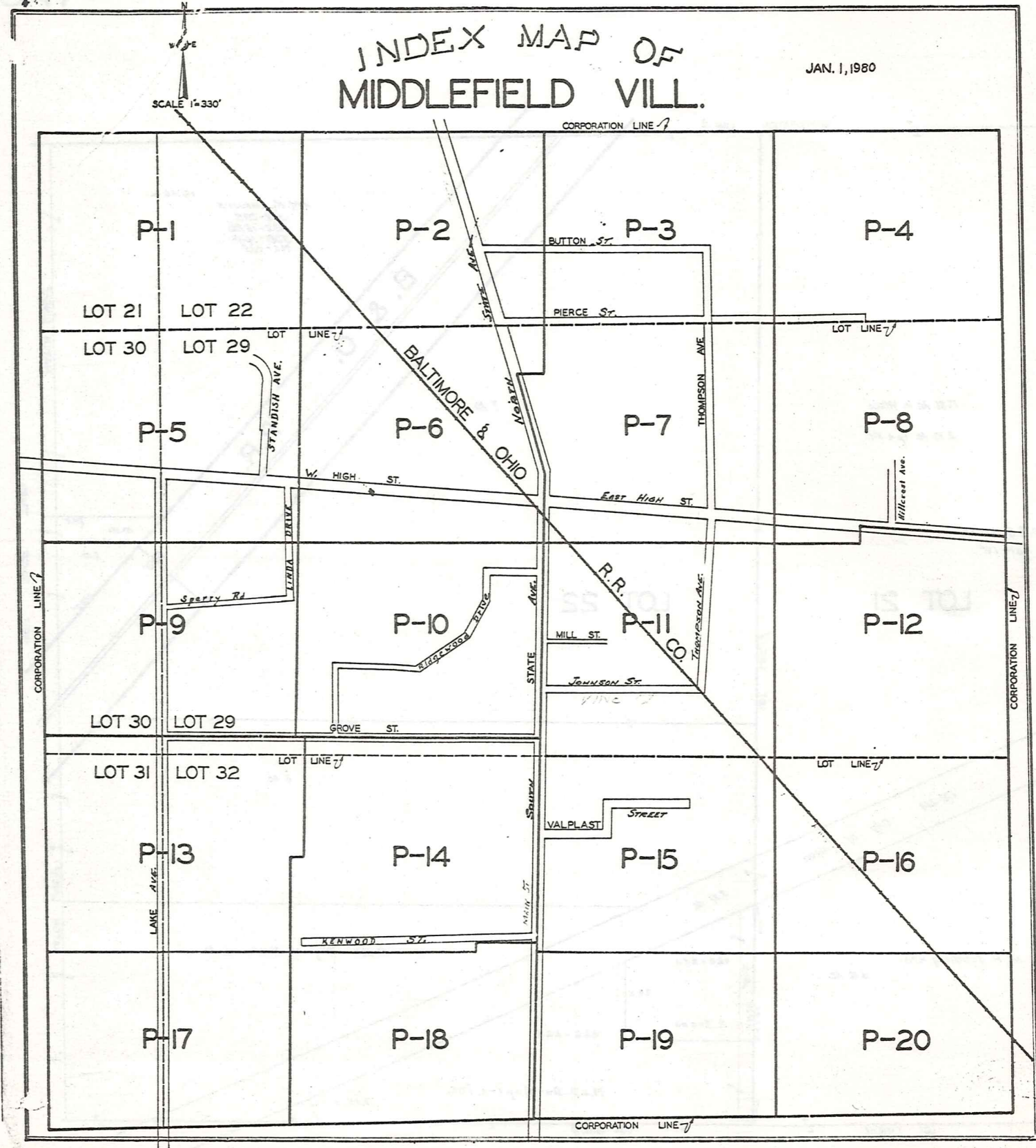
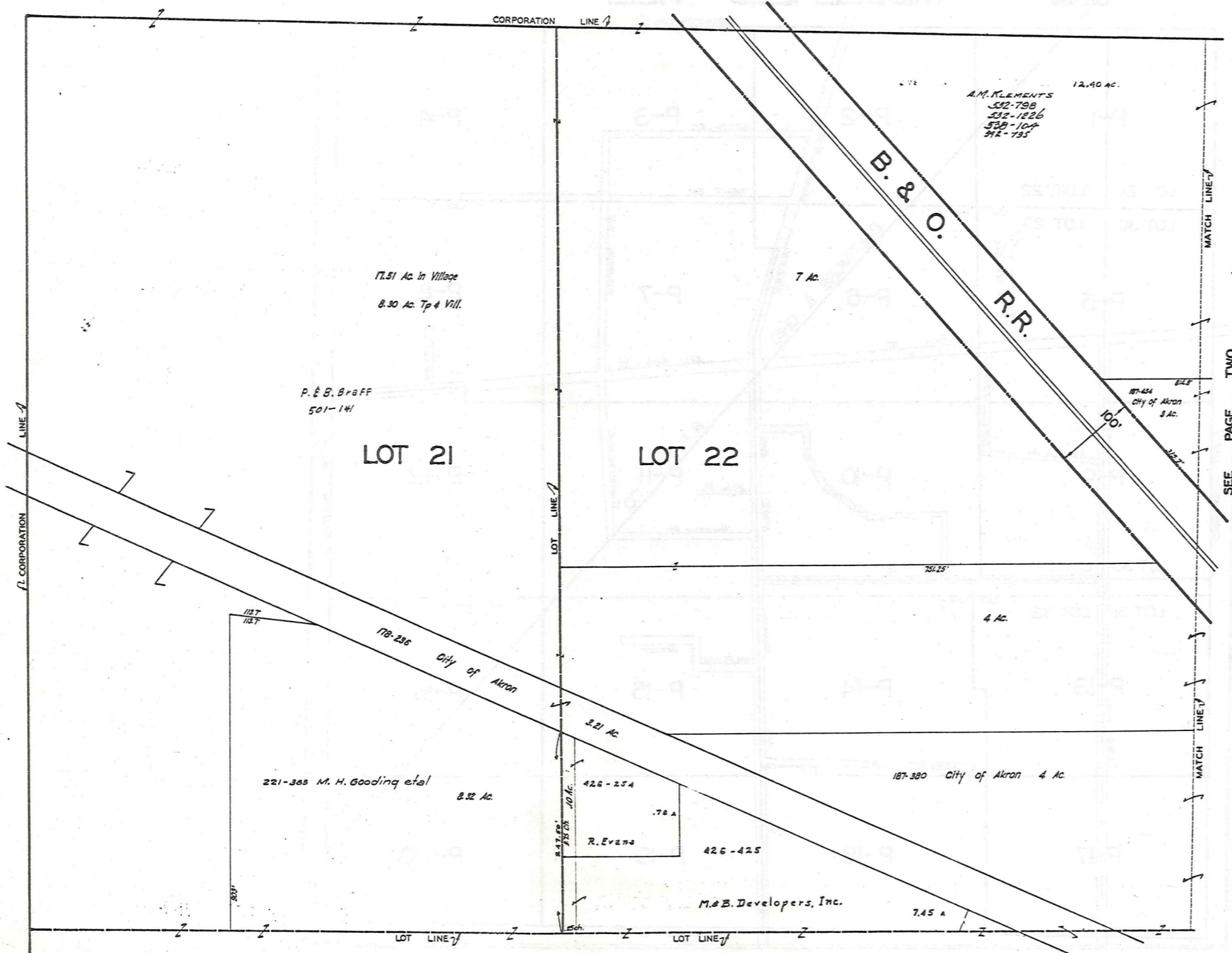


INDEX MAP OF MIDDLEFIELD VILL.

JAN. 1, 1980

SCALE 1"=330'



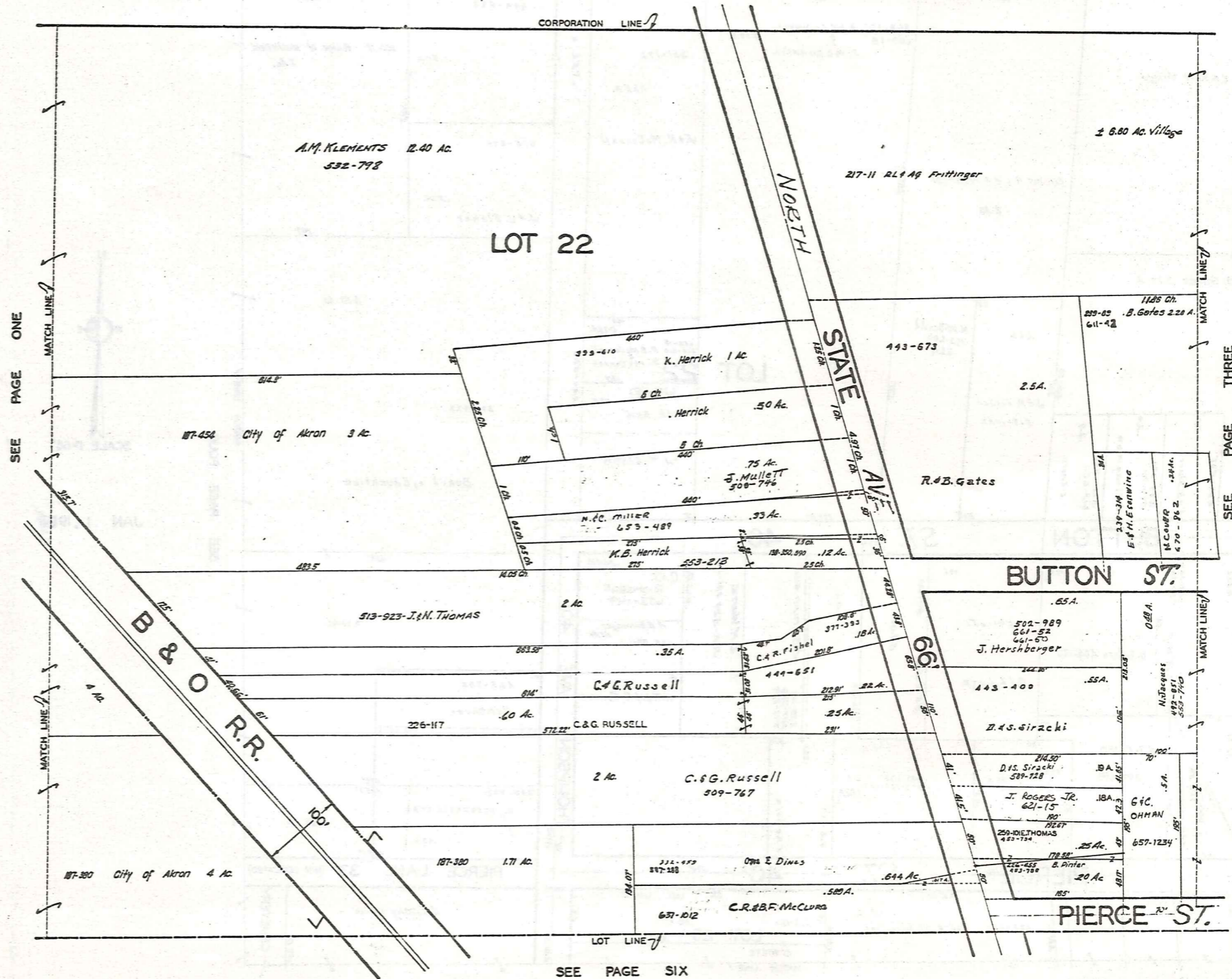


SEE PAGE TWO



JAN. 1, 1965

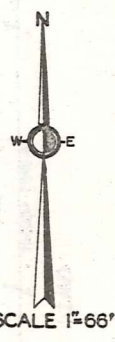
SEE PAGE FIVE



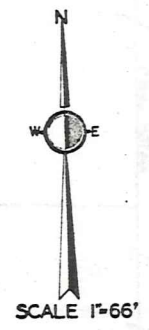
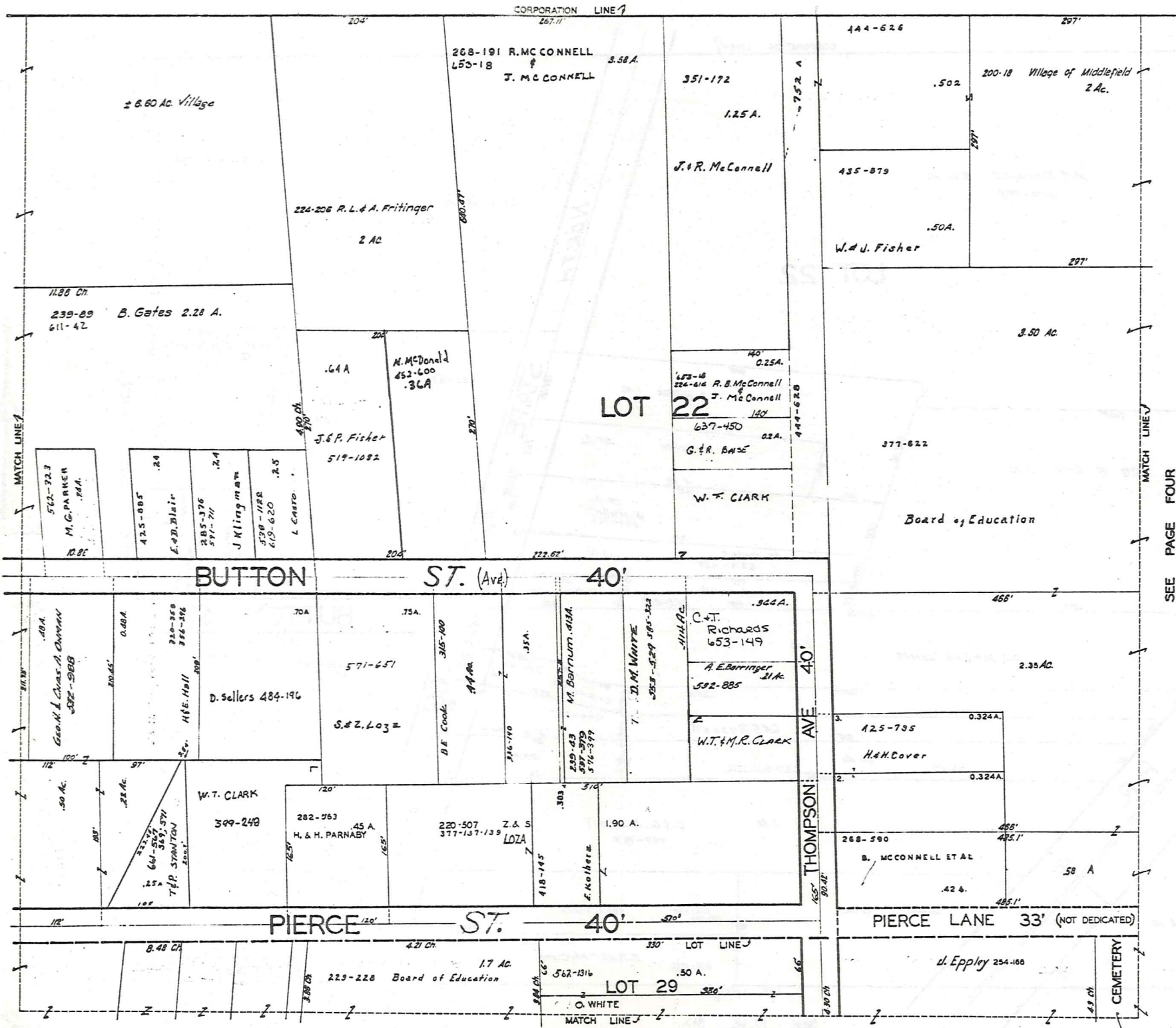
SEE PAGE ONE

SEE PAGE THREE

SEE PAGE SIX



JAN 1, 1988

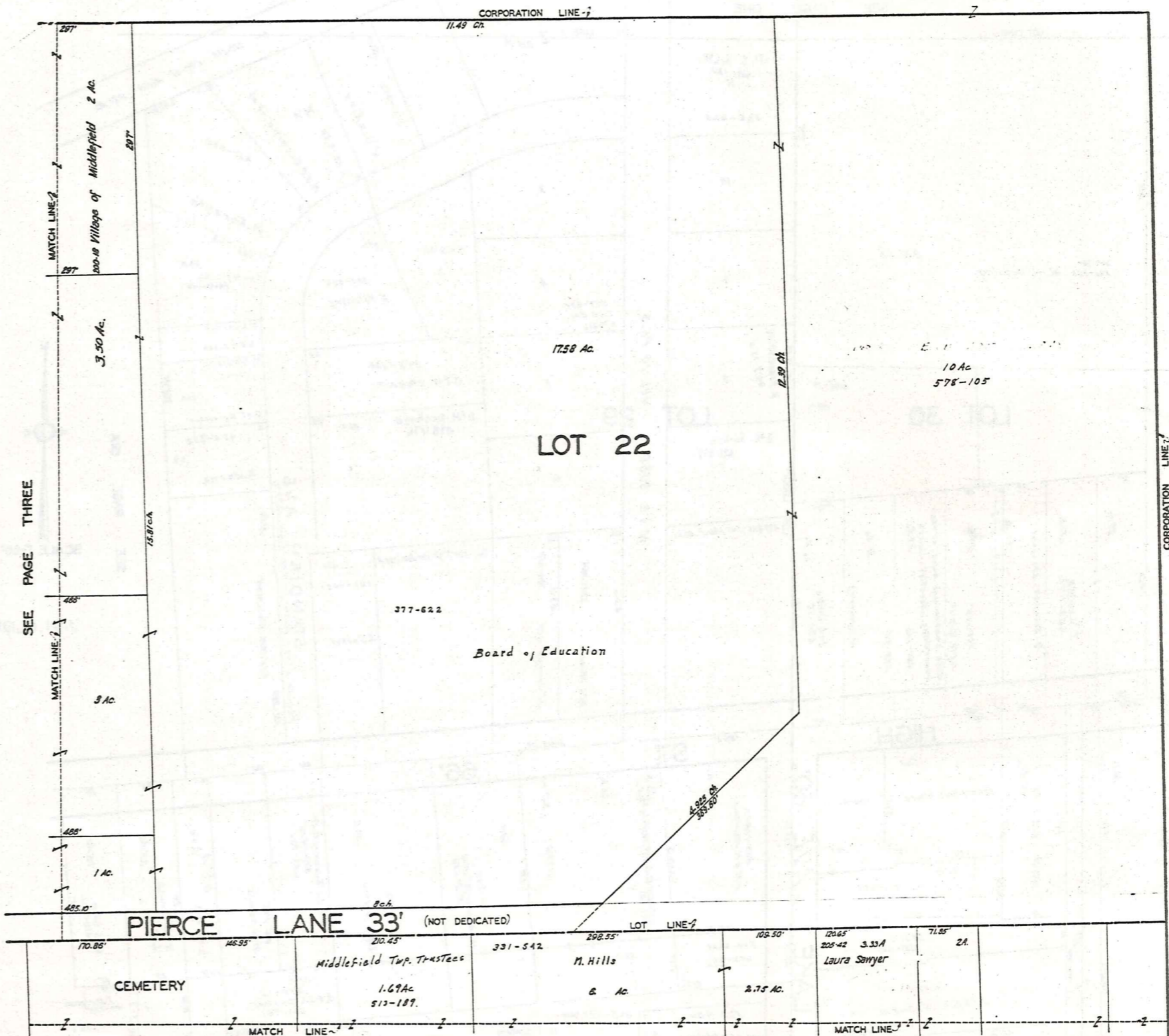


JAN 1, 1980

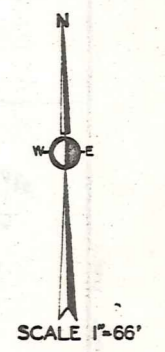
SEE PAGE TWO

SEE PAGE FOUR

SEE PAGE SEVEN



SEE PAGE THREE



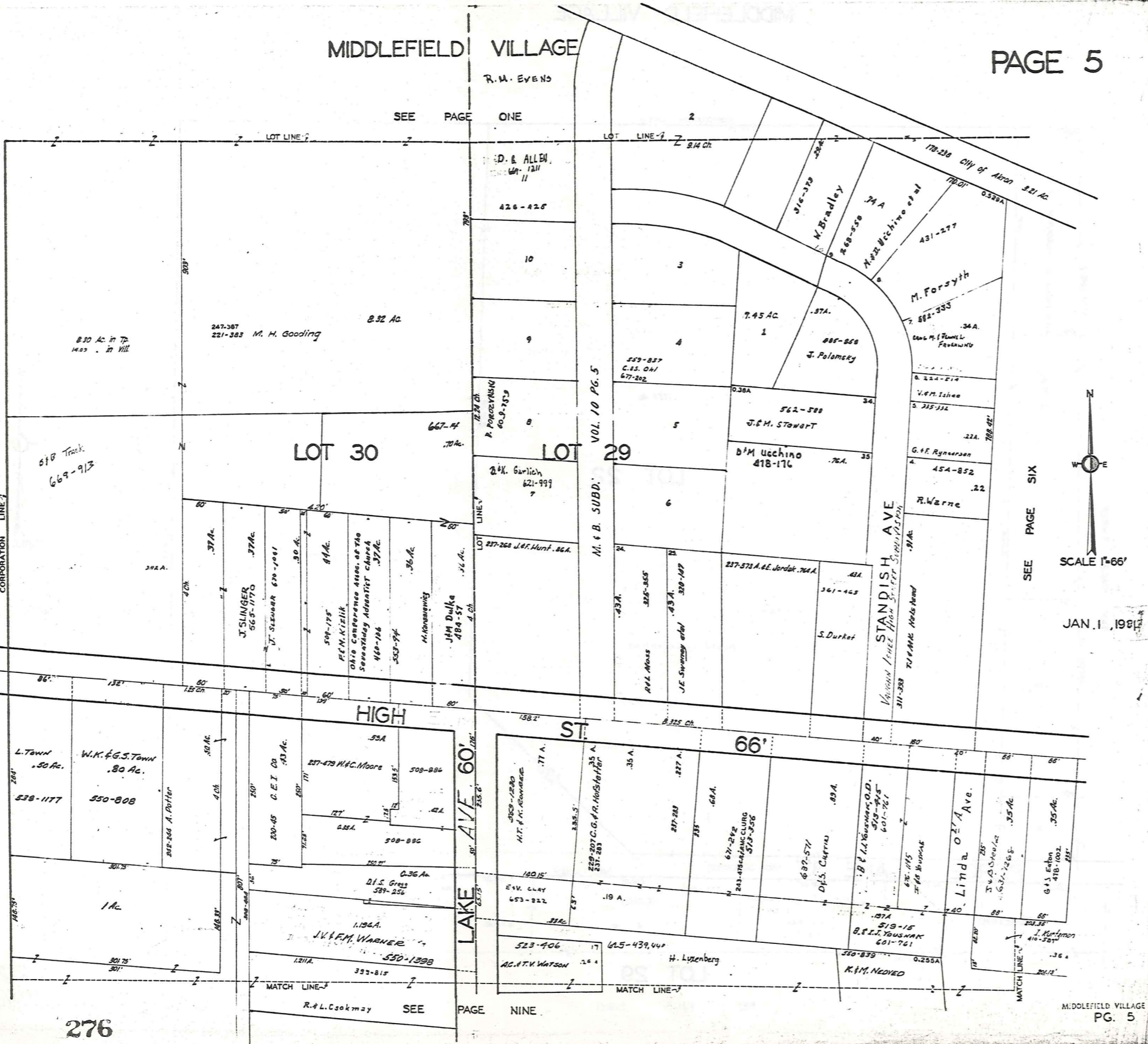
JAN .1, 1982

LOT 29

SEE PAGE EIGHT

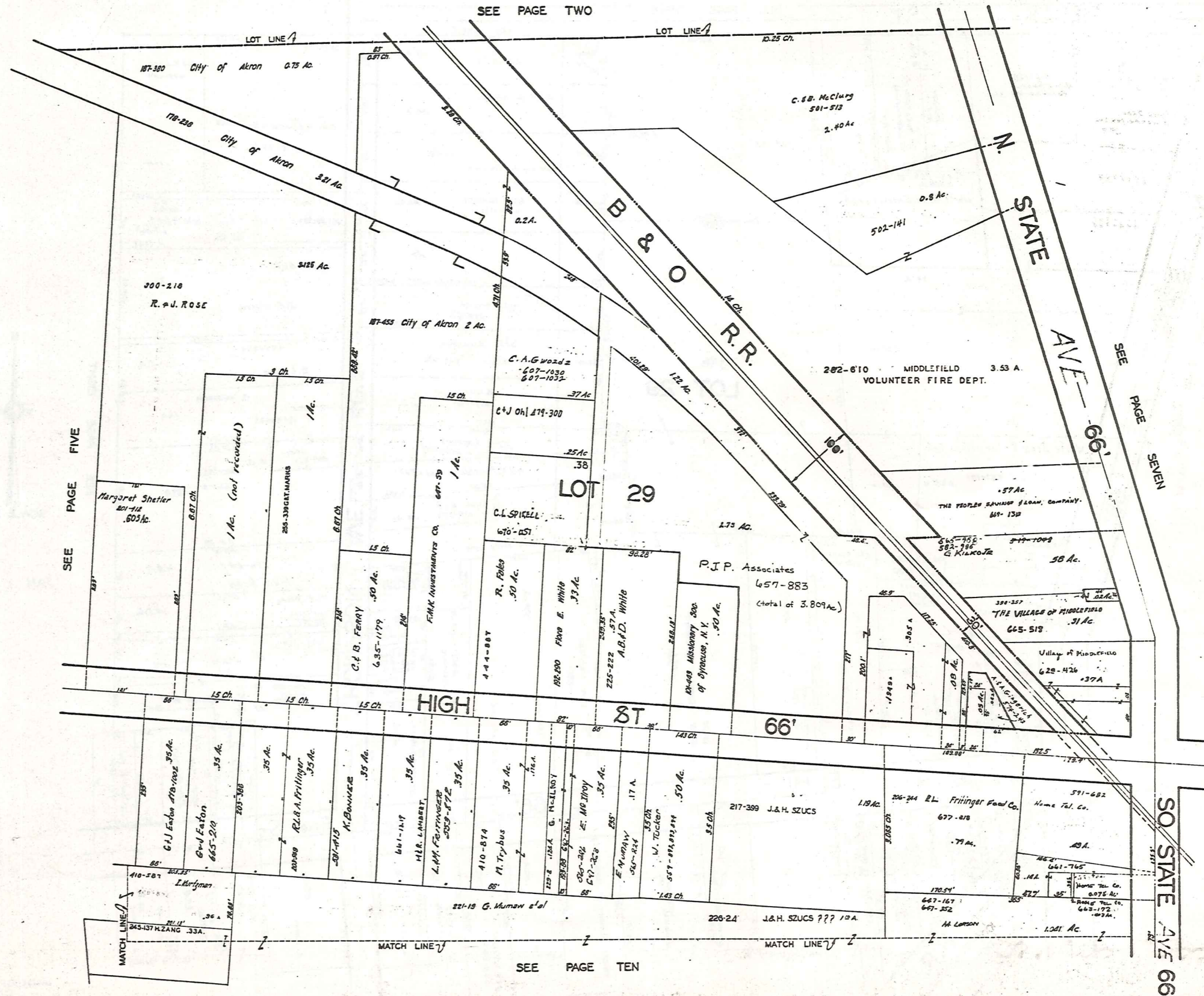
275
MIDDLEFIELD VILLAGE
PG. 4

MIDDLEFIELD VILLAGE



MIDDLEFIELD VILLAGE

SEE PAGE TWO



JAN. 1, 1938

SEE PAGE THREE



SEE PAGE SIX

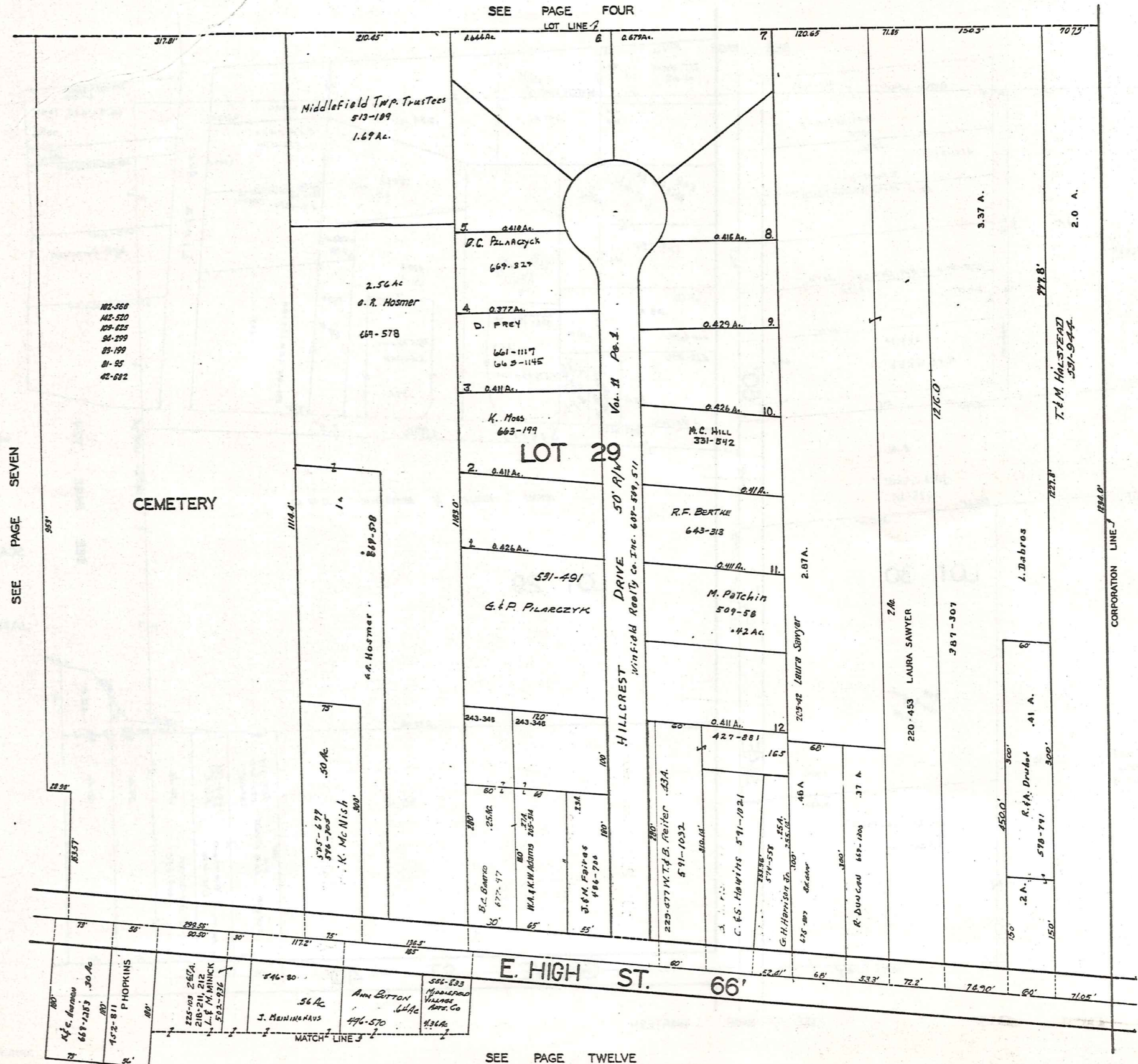
SEE PAGE EIGHT



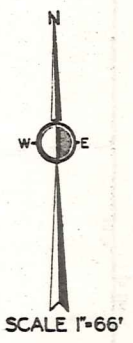
JAN. 1, 1955

SEE PAGE ELEVEN

SEE PAGE FOUR
LOT LINE 1

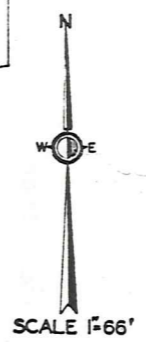
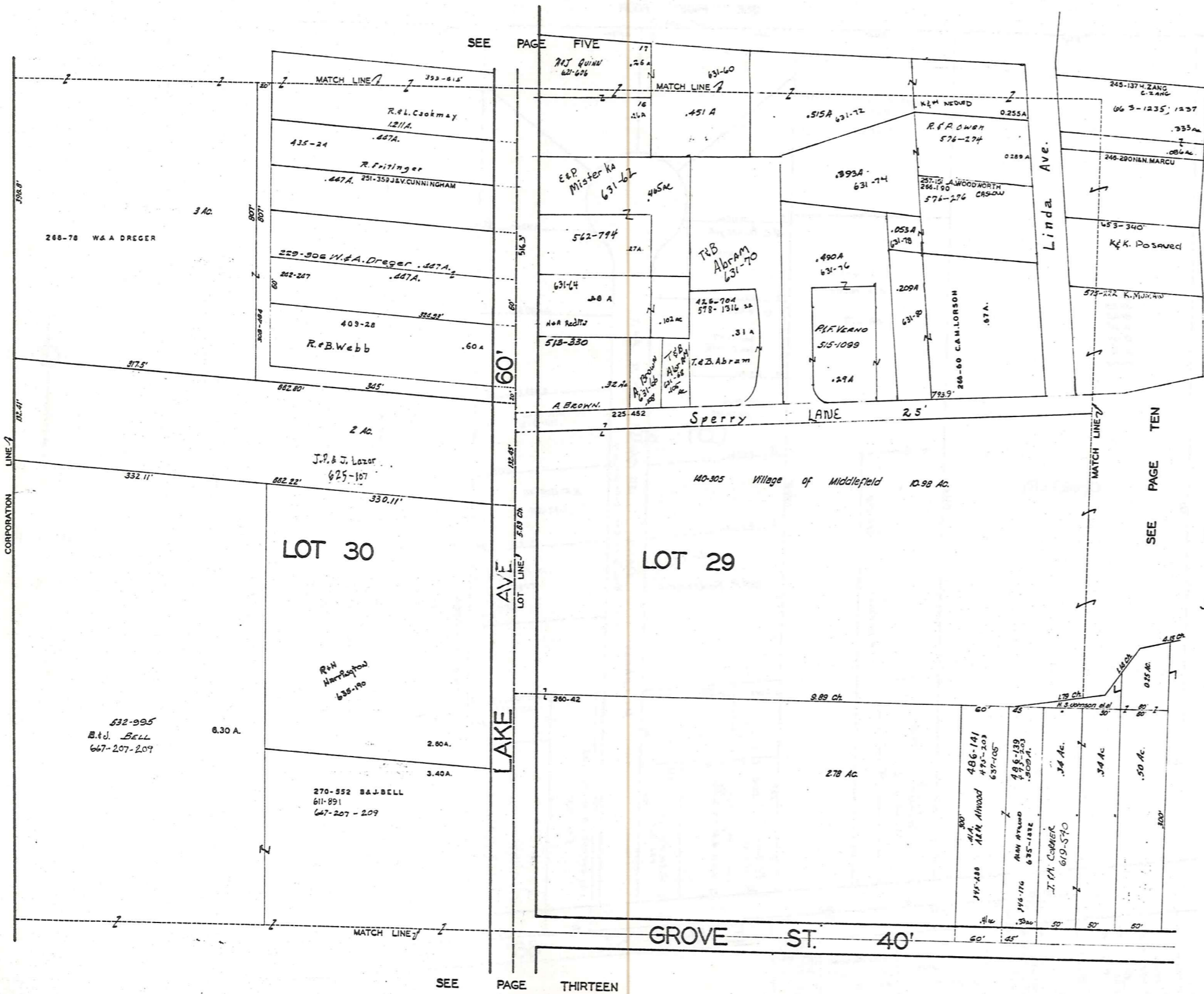


SEE PAGE SEVEN



JAN 1, 1966

SEE PAGE TWELVE



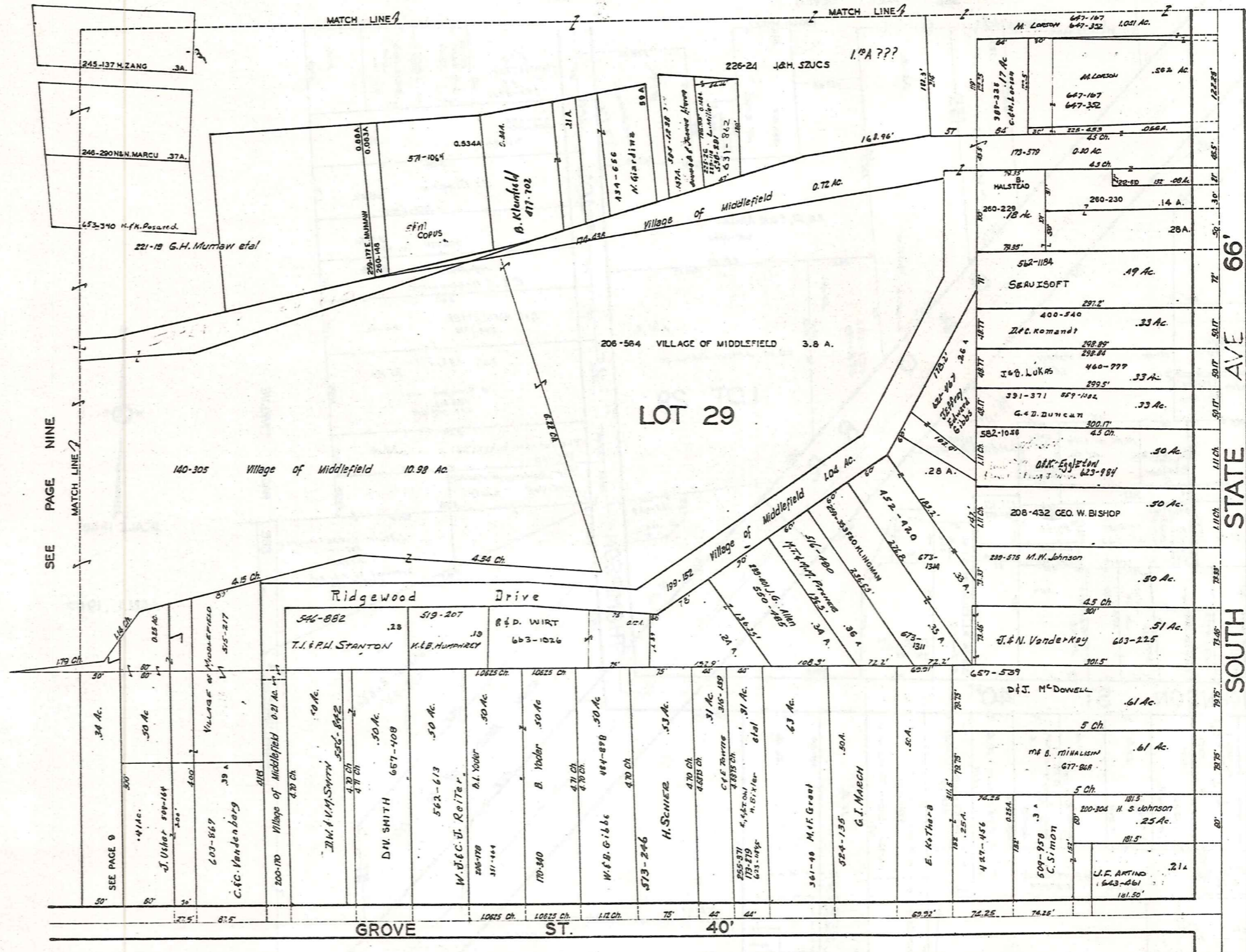
JAN. 1, 1988

SEE PAGE THIRTEEN

SEE PAGE TEN

MIDDLEFIELD VILLAGE

SEE PAGE SIX



SEE PAGE NINE

SOUTH STATE AVE 66'

SEE PAGE ELEVEN



SCALE 1"=66'

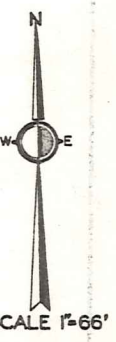
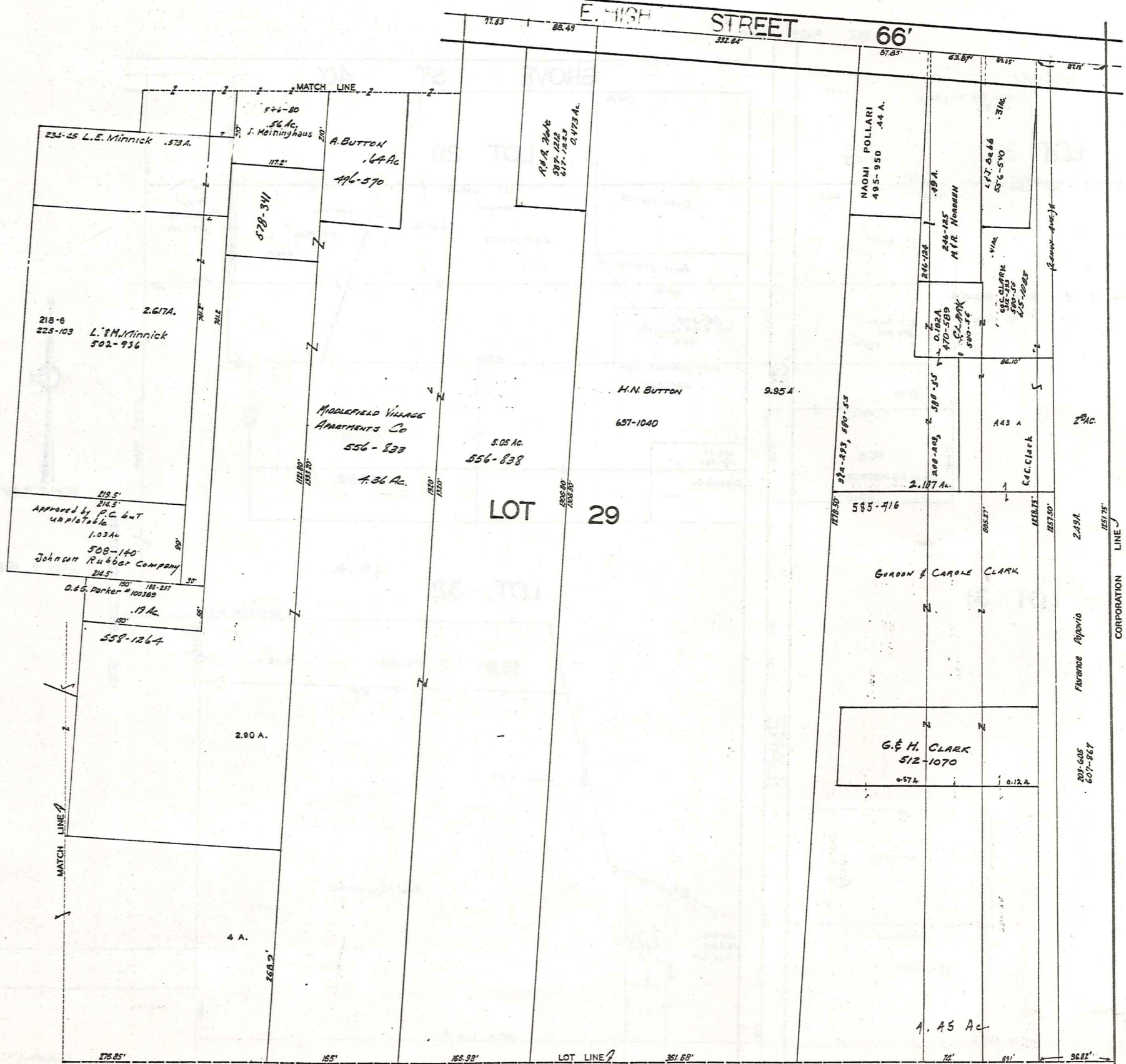
JAN. 1, 1983

SEE PAGE FOURTEEN

SEE PAGE EIGHT

SEE PAGE ELEVEN

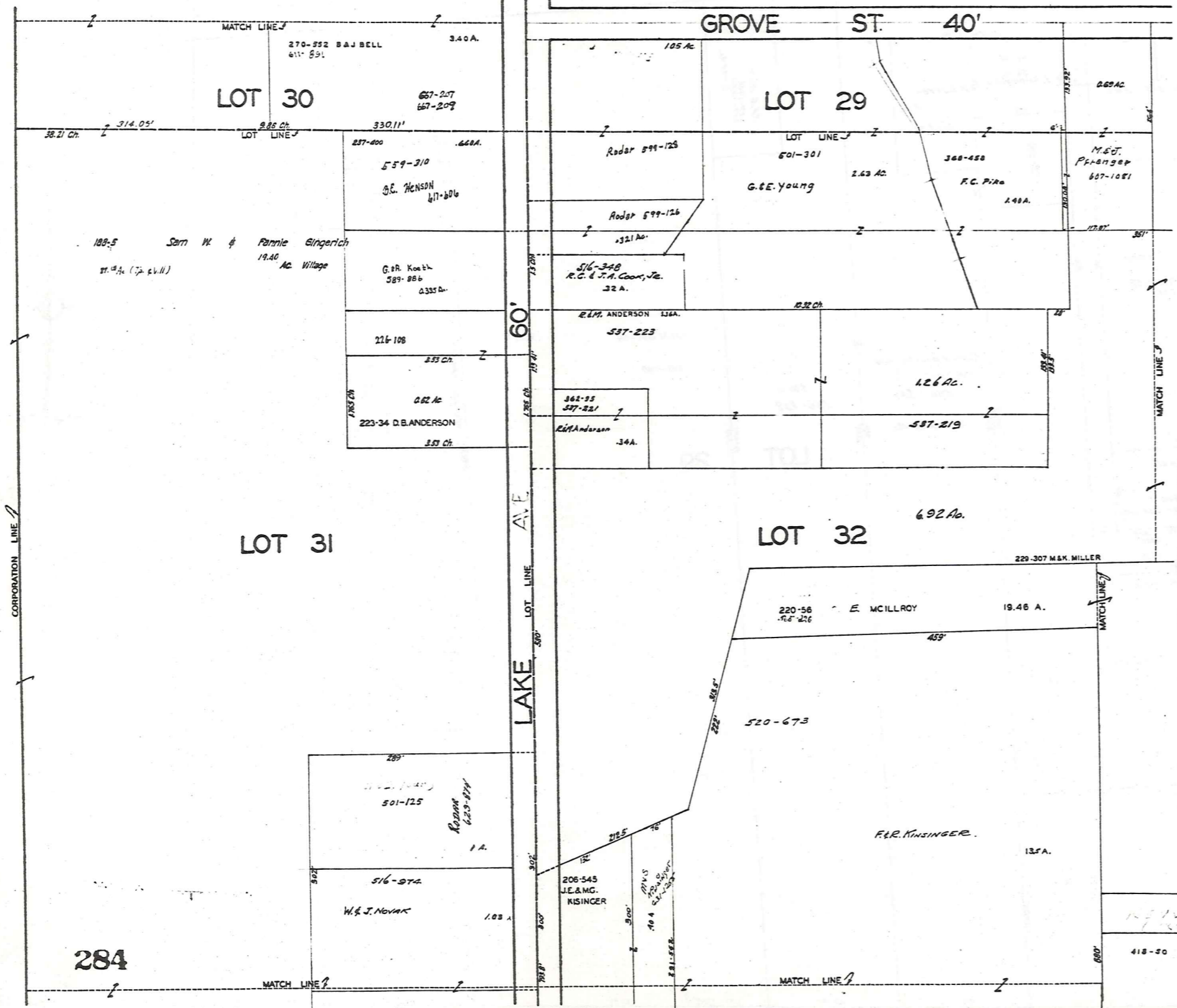
SEE PAGE SIXTEEN



JAN. 1, 1960

SEE PAGE NINE

SEE PAGE SEVENTEEN



JAN. 1, 1980

SEE PAGE FOURTEEN

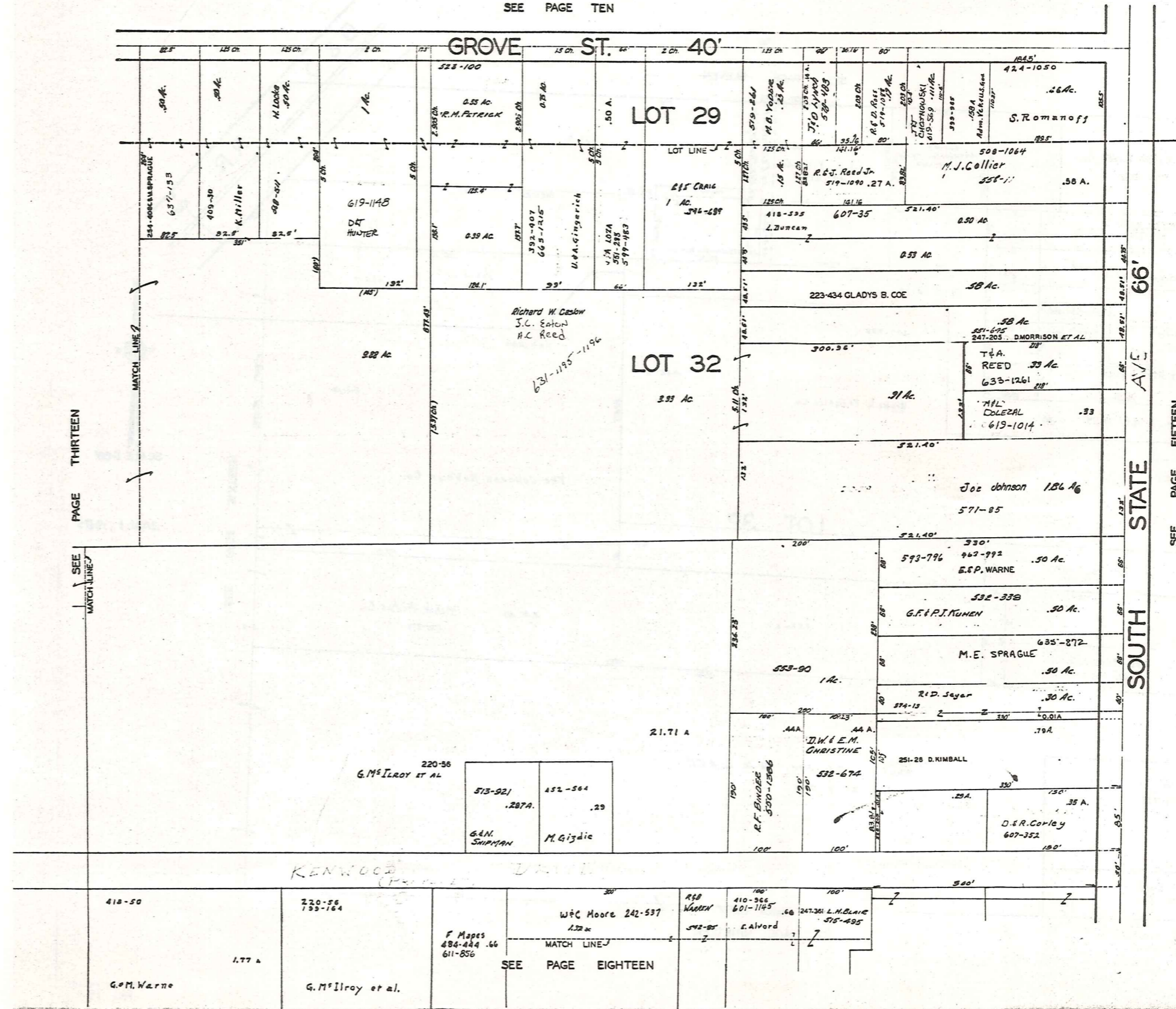
284

MIDDLEFIELD VILLAGE
PG. 13
G. & M. Warner
277 A

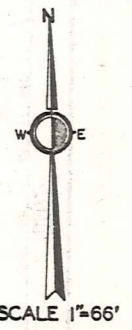
SEE PAGE TEN

PAGE THIRTEEN

SEE MATCH LINE

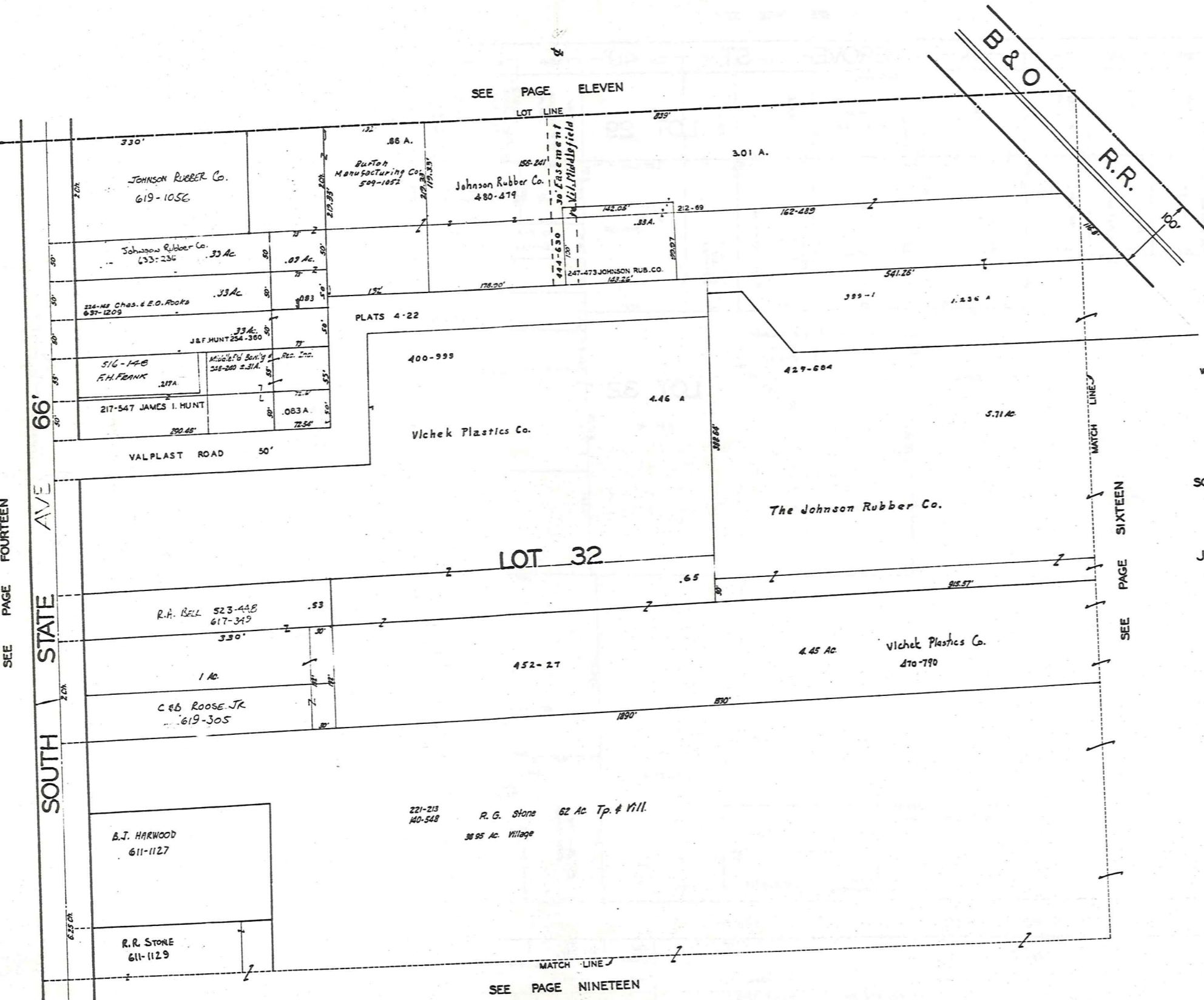


SEE PAGE FIFTEEN



JAN 1, 1983

SEE PAGE ELEVEN



SCALE 1"=66'

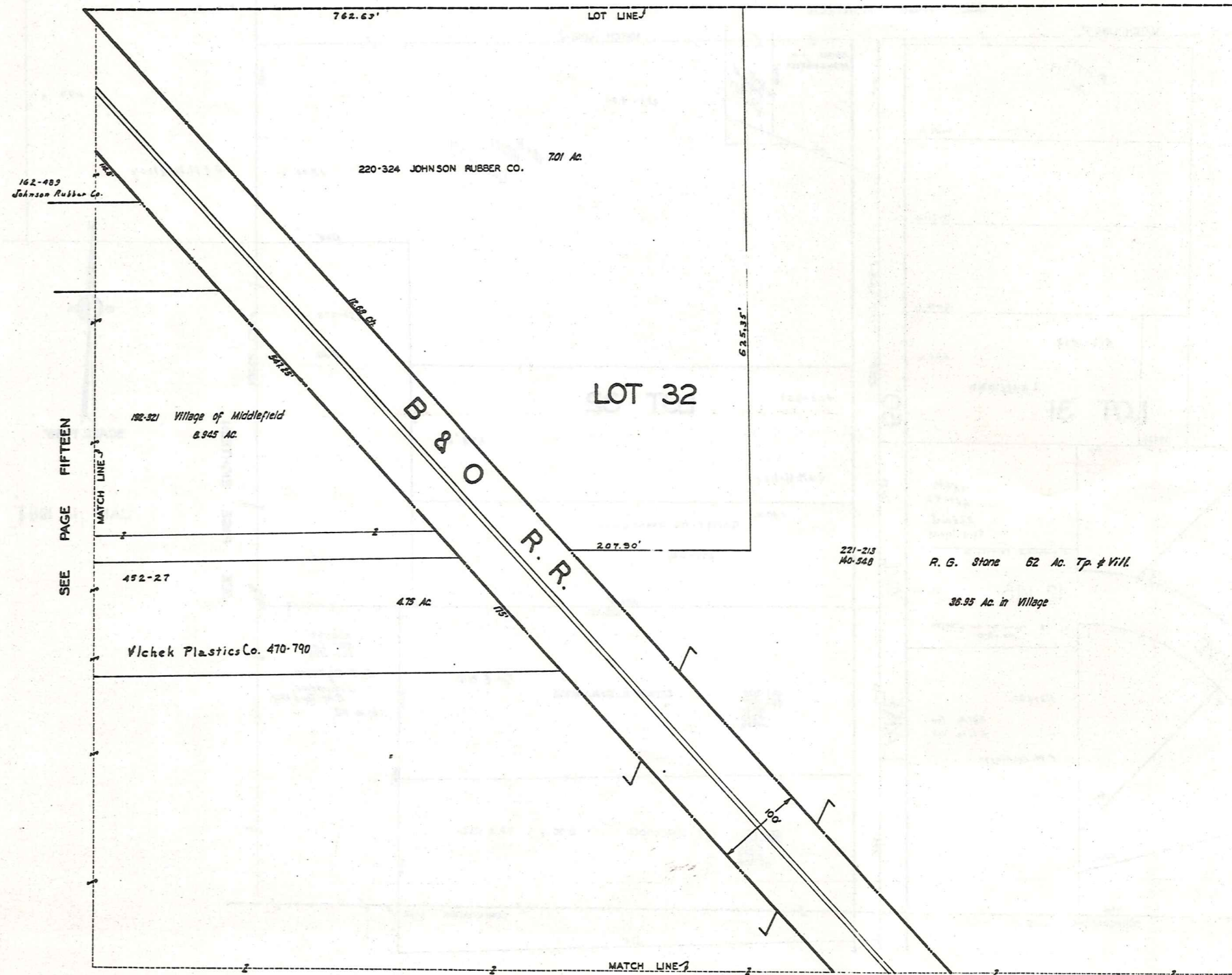
JAN. 1, 1984

SEE PAGE FOURTEEN

SEE PAGE SIXTEEN

SEE PAGE NINETEEN

SEE PAGE TWELVE



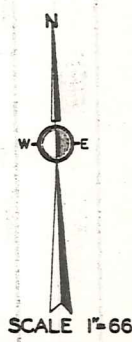
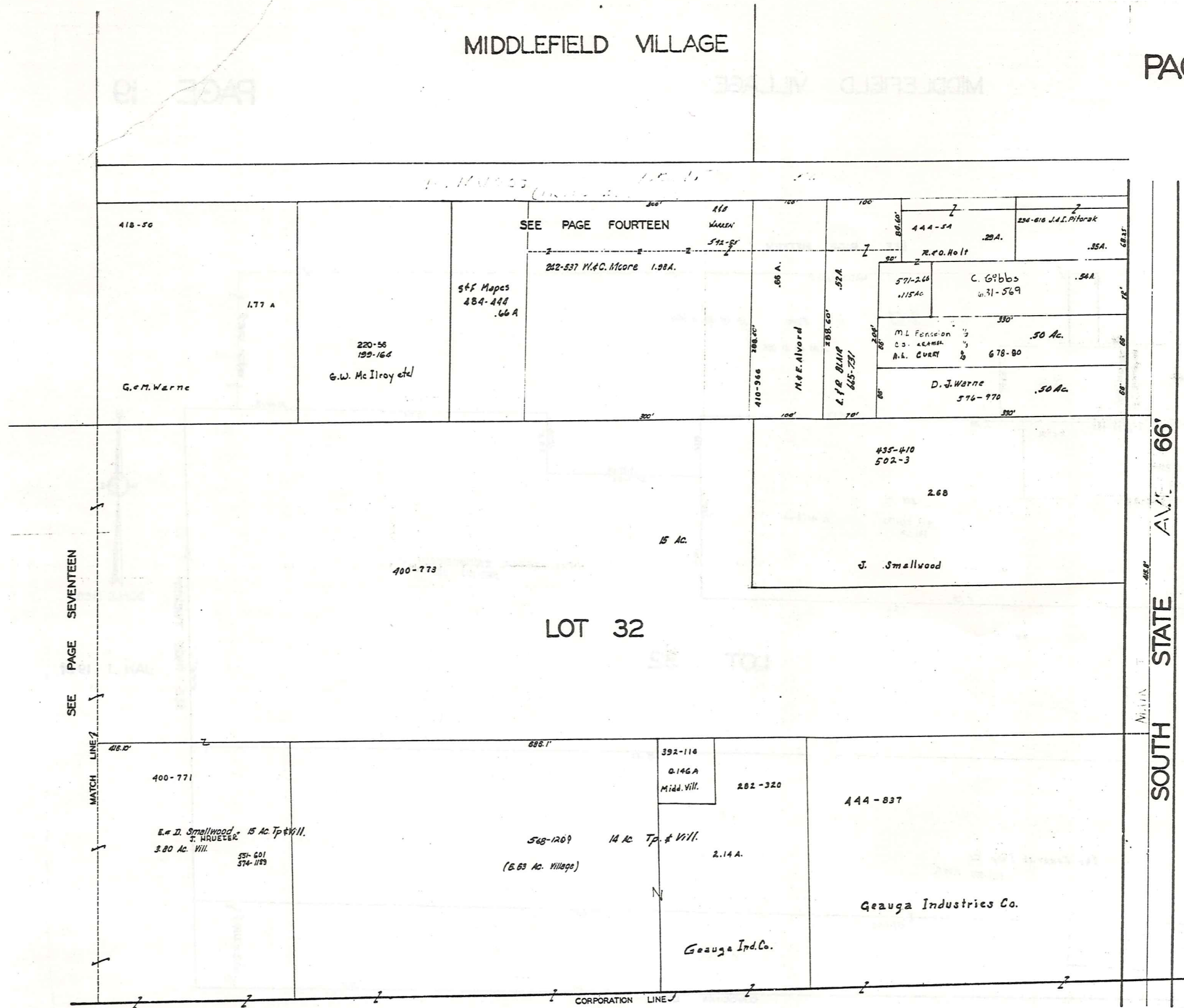
SEE PAGE FIFTEEN

SEE PAGE TWENTY



SCALE 1"=66'

JAN 1, 1988



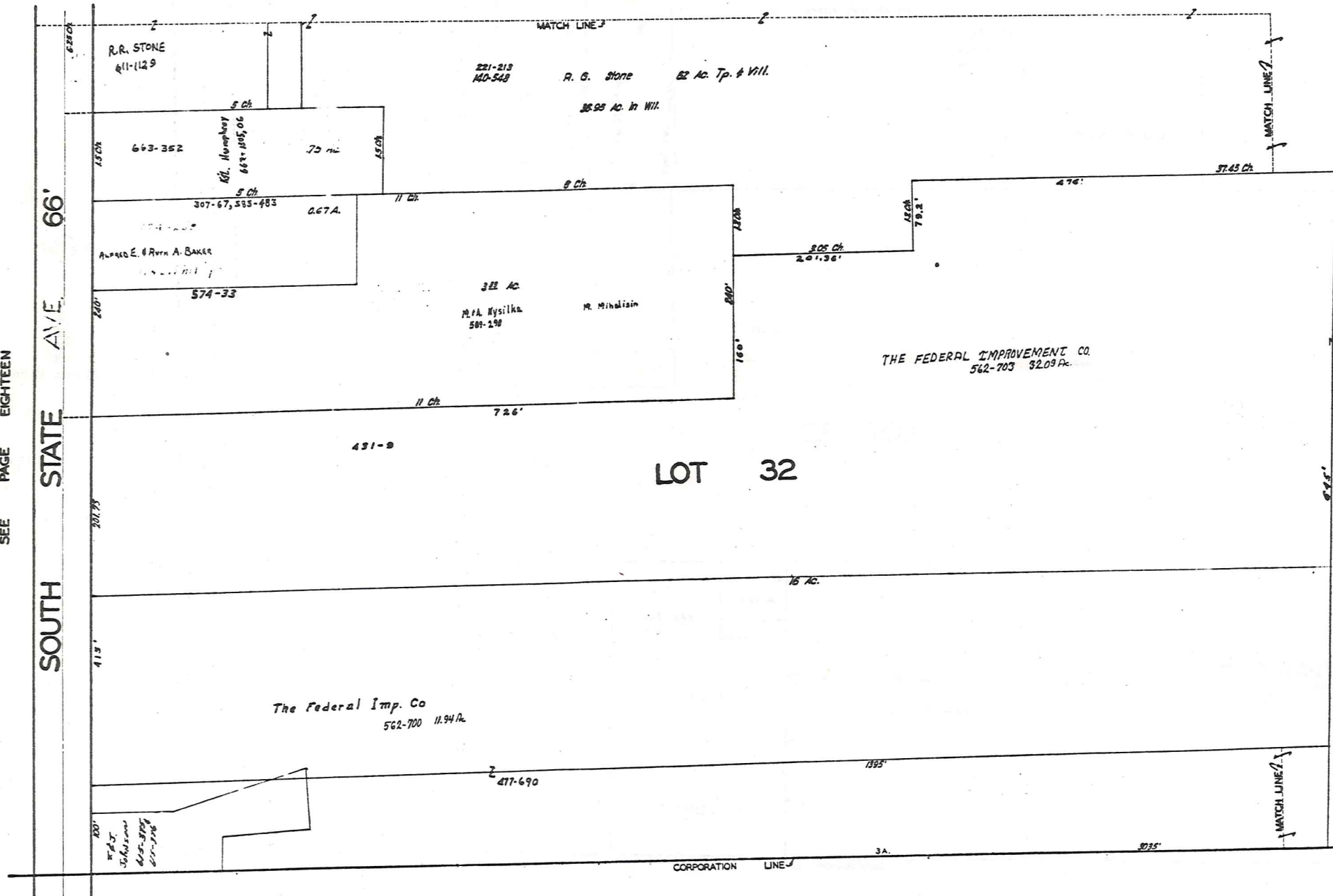
JAN 11 1981

SOUTH STATE AVE. 66'

SEE PAGE NINETEEN

SEE PAGE SEVENTEEN

SEE PAGE FIFTEEN



SCALE 1"=66'

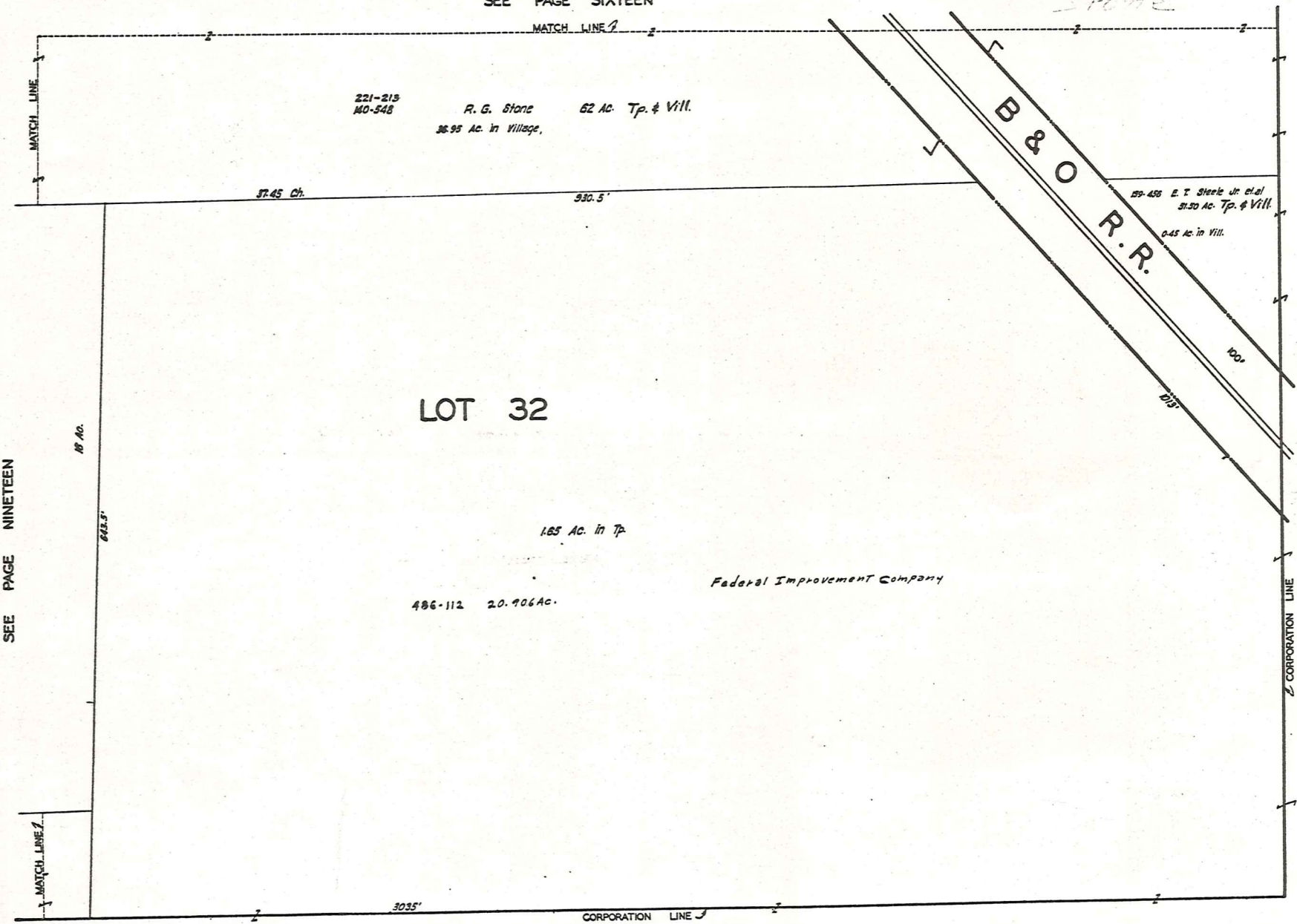
JAN. 1, 1989

SEE PAGE EIGHTEEN

SOUTH STATE AVE. 66'

SEE PAGE TWENTY

SEE PAGE SIXTEEN



SEE PAGE NINETEEN



JAN .1, 1921

Explanation and Use Sheet for Geauga County, Ohio

SAMPLE (PARTIAL) COUNTY INDEX MAP



- Township Boundary
- Township Name
- Village Boundary
- Village Name
- Tract Lot Number
- Street Name
- Acreage
- Deed Book & Page
- Owners Name
- Denotes Continous Ownership

SAMPLE (PARTIAL) MAP PAGE



- Map Page Number
- Village Name
- Village Boundary
- Township Name

SAMPLE (PARTIAL) MUNICIPALITY INDEX MAP



- Street Name
- Village Name
- Township Name

USE OF THE MAP VOLUME

1. LOCATE THE GENERAL AREA OF INTEREST ON THE COUNTY INDEX MAP, ATLAS PAGE 'B', AND NOTE THE MUNICIPALITY NAME (TOWNSHIP OR VILLAGE).
2. REFER TO THE TABLE OF CONTENTS, ATLAS PAGE 'C', AND NOTE THE BEGINNING ATLAS PAGE NUMBER FOR THE MUNICIPALITY OF INTEREST.
3. TURN TO THE PAGE INDICATED. ON THIS PAGE WILL APPEAR AN INDEX MAP FOR THAT MUNICIPALITY.
4. LOCATE THE GENERAL AREA OF INTEREST AND NOTE THE MAP PAGE NUMBER. THIS MAY BE EITHER A LETTER OR A NUMBER.
5. MAP PAGES ARE IN ALPHABETICAL (OR NUMERICAL) SEQUENCE FOLLOWING THE MUNICIPALITY INDEX MAP. FOLLOW SEQUENCE TO THE MAP PAGE INDICATED.
6. LOCATE SPECIFIC PARCEL OF INTEREST AND NOTE THE DESIRED INFORMATION.

NOTE: ON SOME MAPS YOU MAY BE REFERRED TO A DETAIL SHEET SHOWING AN ENLARGEMENT OF THE AREA. THESE MAPS ARE FOUND AT THE END OF THE REGULAR MAP PAGES IN EACH MUNICIPALITY IN EITHER ALPHABETICAL OR NUMERICAL SEQUENCE.

NOTE: CHARDON VILLAGE HAS TITLE SHEETS. TO LOCATE OWNERS NAME, NOTE THE PARCEL NUMBER, REFER TO THE TITLE PAGE FOLLOWING THE MAP OF INTEREST, FOLLOW NUMERICAL SEQUENCE TO THE PARCEL NUMBER OF INTEREST AND NOTE THE DESIRED INFORMATION. IN ALL OTHER MUNICIPALITIES THE OWNERS NAME APPEARS ON THE MAP PAGE.

This book is the property of REAL ESTATE DATA, INC. and is distributed by REDI under a leasing arrangement requiring return to REDI upon termination of the lease. REDI reserves the right to reclaim this book if found in the possession of any firm or person where possession was obtained through any unauthorized source.